

2025 EDITION

FOSHAN HUANGYA ALUMINUM TECHNOLOGY CO., LTD.
MADONG ROAD, BOAI MIDDLE ROAD, NANHAI DISTRICT
FOSHAN CITY, GUANGDONG, CHINA

TRUE SYSTEM
MORE SECURITY

HIUMYA
皇雅门窗

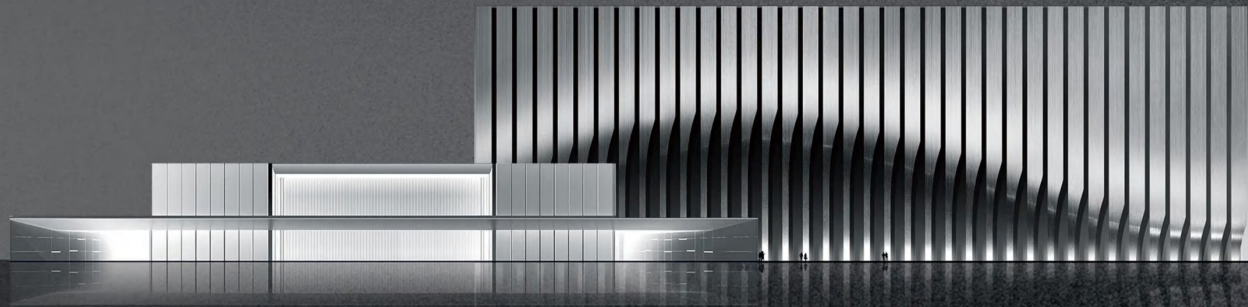
Terminal
Brochure



WINDOW OF ART · AESTHETICS
OUTSIDE THE WINDOW IS
THE AESTHETIC PICTURE OF NATURE

LET US WALK INTO THE AESTHETIC LIFE TOGETHER.
HUMYA DOORS AND WINDOWS IS NOT ONLY ABOUT PRODUCTS,
BUT ALSO A WITNESS OF QUALITY LIFE.





01

BRAND INTRODUCTION -----06-07

02

TILT AND TURN WINDOWS SERIES -----20-21

HYGP88A Tilt and Turn Window -----22-23
 HYP98A Tilt and Turn Window -----24-25
 HYP116A Tilt and Turn Window -----26-27
 HYP85 System Window -----28-29
 HYP96 System Window -----30-31
 HYP102 Tilt and Turn Window -----32-33
 HYP75C Engineering Window -----34-35
 HYP78 System Window -----36-37

03

CASEMENT WINDOWS SERIES -----38-39

HYGT110F Casement Window with Screen -----40-41
 HYP116E Casement Window with Screen -----42-43
 HYP120E High-performance Casement Window -----44-45
 HYP125H Casement Window with Screen -----46-47
 HYP123N Built-in Hardware Casement Window with Screen -----48-49

04

SLIDING DOORS AND WINDOWS SERIES -----50-51

HYGT125C Six-track Sliding Window -----52-53
 HYP125X Suspension Heat-insulating Sliding Window -----54-55
 HYS125M Lifting Sliding Door -----56-57
 HYS189M Lifting Sliding Door -----58-59
 HYP125Z Panoramic sliding door and window -----60-61
 HYP120C Panoramic Sliding Window -----62-63
 HYP150M Panoramic Heat-insulated Sliding Door -----64-65
 HYP175M Panoramic Heat-insulated Sliding Door -----66-67
 HYP128/190 Sliding Door (Non-thermal break) -----68-69
 HYP120B Translating Side Pressure Sliding Door and Window -----70-71
 HYP132A Translating Side Pressure Sealing Sliding Door and Window -----72-73
 HYP184/ 120C Heat-insulating Sliding Window -----74-75

05

DRIFT TILT-IN WINDOWS SERIES -----76-77

HYPY80/106A Drift Tilt-in Window -----78-79

06

SUN ROOM -----80-81

HYP125 Sun Room -----82-83

07

NON-THERMAL BREAK SERIES -----84-85

HYP80W Non-Thermal Break Casement Window -----86-87
 HYP80W Casement Door -----88-89
 HYP80W Non-Thermal Break Sliding Window -----90-91
 HYP80W Non-Thermal Break Sliding Door -----92-93
 HYP80W Non-Thermal Break Folding Door -----94-95

Foshan Huangya Aluminum Technology Co., Ltd., our company has launched a specialized high-quality system about doors and windows brand – HUMYA. Foshan Huangya Aluminum Technology Co., Ltd. , which is headquartered in Nanhai, Foshan, Guangdong, the capital of national building materials, is a professional door and window manufacturer integrating design, manufacturing, sales, installation, and after-sales service. We have 80 franchised factories nationwide, with a total factory area of 400,000 square meters and a national exhibition hall area of 38,000 square meters.

Our company's product system is derived from the German system and the American narrow-edge system. The product line covers sun rooms, thermal break aluminum doors and windows, thermal break aluminum profiles, and hardware accessories, etc.

With a EU standards monitoring base, Foshan Huangya Aluminum Technology Co., Ltd. is a domestic professional building energy-saving doors and windows, smart doors and windows, and decorative doors and windows system joint service customization experience provider. In the future, HUMYA will adhere to the strict EU standards. Based on this era, we will make good system doors and windows without middlemen making a profit from the price difference.



80⁺
National
Production Bases

400000⁺
Total Factory Area

38000⁺
Exhibition Hall Area

5亿⁺
Annual Output Value

15000⁺
Aluminum Warehouse

25000⁺
Extrusion and Powder
Coating Factories

238⁺
Sales Service Outlets

2019

SET SAIL AND PREPARE FOR ACTION

2020

TRANSFORM THINKING AND FOSTER DIVERSIFIED DEVELOPMENT

2021

FOCUS ON OPPORTUNITIES AND BREAK THROUGH CONSTRAINTS

2022

WITH VISION, EMBRACE TRENDS, AND WIN THE FUTURE

2023

HUNDRED CITIES, HUNDRED FACTORIES, CO-CREATE HUNDRED BILLION

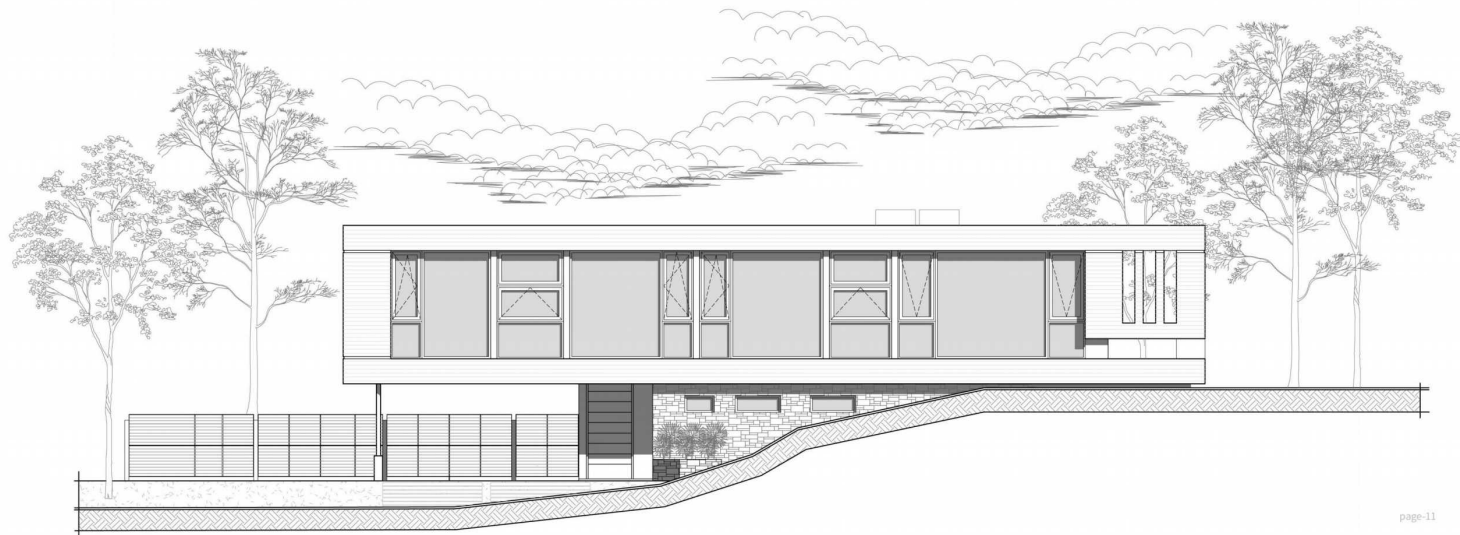
2024

STEADY PROGRESS, FAR-REACHING IMPACT

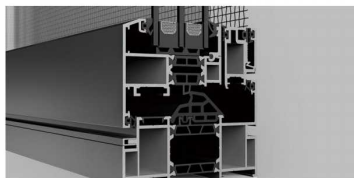


DOORS AND WINDOW SYSTEM SOLUTIONS

At the forefront of the industry
Responsible for human
life and the environment



8 THE EIGHT TRUE SYSTEMS



REAL SYSTEM



GENUINE SERVICE



GENUINE AUXILIARY MATERIAL



TRULY INTELLIGENT



REAL TECHNOLOGY



GENUINE CRAFTSMANSHIP



REAL STRENGTH



REAL FUTURE



DOOR AND WINDOW CUSTOMIZATION EXPERTS



DETAILS WITNESS THE QUALITY

We are in awe of our products, we are obsessed with every detail of doors and windows, we always adhere to the rigorous spirit of craftsmanship, and we will never stop exploring product innovation.



HIGH SOUND INSULATION

Reduce adverse factors such as traffic noise and community noise, etc., create a more peaceful and comfortable living environment, and improve the quality of life.



HIGH AIRTIGHTNESS

Provide effective airtightness, prevent unnecessary air leakage, reduce energy waste, and maintain the stability of the indoor environment.



GOOD SUNSHADE

Effectively block direct sunlight, reduce solar radiation entering the room, and prevent indoor temperature from rising.



ANTI-FOG AND ANTI-FOULING

Reduce the erosion of stains and dirt on the surface of doors and windows, which helps to extend the service life of doors and windows and maintain their original use state.



WATERTIGHT AND STRONG

Strong corrosion resistance, resist acid and alkali erosion and is not affected by air pollution, acid rain, and ozone, not easy to oxidize and deform, and has a longer service life.



THERMAL INSULATION

Multi-cavity insulation system, vertical isotherm design, so the insulation strips, isobaric strips and glass are in the same straight line, stable structure, and enhanced insulation effect.



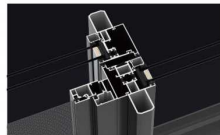
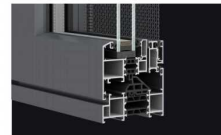
WIND PRESSURE RESISTANCE

Easily resist all kinds of strong winds and rainstorms, typhoon weather, effectively prevent doors and windows vibration, shaking, wind noise and other phenomena, and protect your home safely.



ANTI-THEFT AND ANTI-PRYING

Strengthened doors and windows structures and locks can improve the stability of doors and windows and prevent intruders from breaking into them with tools such as crowbars.



GLOBAL BRANDSUPPLY CHAIN

With a complete supply chain system, we strictly select world-renowned suppliers and conduct strict inspections on accessories according to the 50-year product lifespan standard to ensure product quality, so consumers can purchase with confidence.



HUMYA is committed to being the leading brand of doors and windows in China.

Focus on building 300+ domestic and 10+ foreign high-quality HUMYA shared factories, serving 50+ leading doors and windows companies.

We have a independent R&D team to develop doors and windows system solutions with first-rate quality, walking at the forefront of the industry.

Committed to becoming an industry pioneer with outstanding doors and windows technology and services in the present and future, responsible for human life and the environment.



300+
DOMESTIC
FACORIES

10+
FOREIGN HIGH QUALITY
HUMYA SHARED FACTORY

50+
FOREIGN HIGH QUALITY
HUMYA SHARED FACTORY

ENTERPRISE HONOR

HUMYA has a relatively complete service system, with 10,000 tons of spot inventory, flexible and changeable. And we have a strong product matrix that can meet all application scenarios.

A well-known first-line brand, 80 production bases across the country, exhibition hall area of 38,000 square meters+, 238 sales and service outlets, 12 core R&D technologies, 10 national standards, 16 practical patent.

Won CCTV1/CCTV4/CCTV7/CCTV10 CCTV recommended brand, China Top Ten Doors and Windows Brands/ China Top Ten Home Decoration Doors and Windows Brands/ China Top Ten Aluminum Alloy Doors and Windows Brands/ Guangdong Provincial Doors and Windows Industry Vice Chairman Unit/ China Top 100 Innovation Demonstration Enterprises/ Quality-Service-Reputation AAA Brand/ China Top Ten Brands in the Doors and Windows System Industry/ China Top Ten Doors and Windows System Enterprises/ China Well-known Brand/ National High-tech Energy-saving Products and other brand awards.



TILT AND TURN WINDOWS SERIES

-  HIGH SOUND INSULATION
-  HIGH AIR TIGHTNESS
-  STRONG WATER TIGHTNESS
-  THERMAL INSULATION
-  WIND PRESSURE RESISTANCE
-  GOOD SUNSHADE
-  ANTI-FOG AND ANTI-FOULING
-  ANTI-THEFT AND ANTI-PRYING



HYGP88A TILT AND TURN WINDOW



HYGP88A
Double inward opening
(and tilting) window with screen



HYGP88A
Single inward
opening (and tilting) window



HYGP88A
Outward opening door

PRODUCT CONFIGURATION

Item Name : HYGP88A Tilt and turn window

Against the Wall Width: 88mm

Insulation Strip Width: 35.3mm

Profile Thickness: 1.8mm

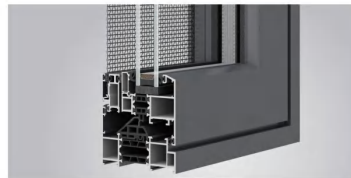
Glass: 5+20A+5

Sash Visible Surface Size : 65mm or 72mm

Opening Mode : Inward opening and tilting, external screen,
double inward opening

PRODUCT ADVANTAGE

- ⊙ This series is a product created with a simple and fashionable style and systematic thinking.
- ⊙ The outer frame has no hidden drainage structure, and the outer frame can be drained by high-energy drainage or floor drain. Installing a windproof drainage hole cover can solve the whistling sound caused by hidden drainage.
- ⊙ The inside and outside are flush with the design, which is more simple and beautiful.
- ⊙ No conversion frame design, and the insulation strip adopts a 35.3mm ultra-wide multi-cavity insulation strip, and the insulation strip is located on the same vertical line.
- ⊙ The glass sash adopts a three-stage sealing structure. The glass adopts a glue-free strip process (EPDM) is used inside the glass, and EPDM foamed composite soft and hard co-extruded strips are used outside the glass, which greatly increases the extrusion amount of the outer glass strip.
- ⊙ Inward opening window screen adopts a special quick-detachable hinge and two-point lock.
- ⊙ The outer frame, conversion frame, and sash are all designed with extruded aluminum injection corner code.
- ⊙ Triple tempered glass is optional.
- ⊙ The solid glass pressure line is designed as a bevel pressure line.



HYGP98A TILT AND TURN WINDOW



HYGP98A
Single inside opening (and tilting)
window with external screen



HYGP98A
Double inward opening
(and tilting) window with screen



HYGP98A
Outward opening door

PRODUCT CONFIGURATION

Item Name : HYGP98A Tilt and turn window

Against the Wall Width: 98mm

Insulation Strip Width: 45.3mm

Profile Thickness: 1.8mm

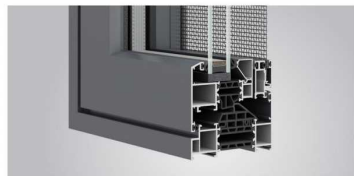
Glass: 5+19A+5/5+12A+5+12A+5
5+19A+5 or 5+12A+5+12A+5 Optional

Sash Visible Surface Size : 65mm or 72mm

Opening Mode : Inward opening and tilting, external screen,
double inward opening

PRODUCT ADVANTAGE

- ① This series is a product created with a simple and fashionable style and systematic thinking.
- ② The outer frame has no hidden drainage structure, and the outer frame can be drained by high-energy drainage or floor drain. Installing a windproof drainage hole cover can solve the whistling sound caused by hidden drainage.
- ③ The inside and outside are flush with the design, which is more simple and beautiful.
- ④ No conversion frame design, and the insulation strip adopts a 45.3mm ultra-wide multi-cavity insulation strip, and the insulation strip is located on the same vertical line.
- ⑤ The glass sash adopts a three-stage sealing structure. The glass adopts a glue-free strip process (EPDM is used inside the glass, and EPDM foamed composite soft and hard co-extruded strips are used outside the glass), which greatly increases the extrusion amount of the outer glass strip.
- ⑥ Inward opening window screen adopts a special quick-detachable hinge and two-point lock.
- ⑦ The outer frame, conversion frame, and sash are all designed with extruded aluminum injection corner code.
- ⑧ Triple tempered glass is optional.
- ⑨ The solid glass pressure line is designed as a bevel pressure line.





HYGP116A TILT AND TURN WINDOW



HYGP116A
Double inward opening (and tilting)
window with screen

PRODUCT CONFIGURATION

Item Name : HYGP116A Tilt and turn window

Against the Wall Width : 118mm

Insulation Strip Width : Outer frame 35.3mm +18.6mm
Double inner opening glass sash 35.3mm

Profile Thickness : 1.8mm

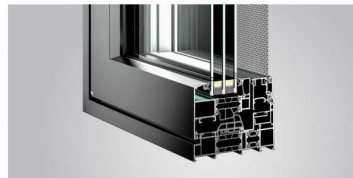
Glass : 5+19A+5/5+12A+5+12A+5
5+19A+5 or 5+12A+5+12A+5 Optional

Sash Visible Surface Size : 65mm or 72mm

Opening Mode : Double inward opening

PRODUCT ADVANTAGE

- ◎ This series is a product created with a simple and fashionable style and systematic thinking.
- ◎ The outer frame has no hidden drainage structure, and the outer frame can be drained by high-energy drainage or floor drain. Installing a windproof drainage hole cover can solve the whistling sound caused by hidden drainage.
- ◎ The inside and outside are flush with the design, which is more simple and beautiful.
- ◎ No conversion frame design, and the frame and the mullion use 35.3mm wide multi-cavity insulation strips and 18.6mm wide O-type insulation strips, and the glass sash uses 35.3mm insulation strips.
- ◎ The glass sash adopts a three-stage sealing structure. The glass adopts a glue-free strip process (EPDM is used inside the glass, and EPDM foamed composite soft and hard co-extruded strips are used outside the glass), which greatly increases the extrusion amount of the outer glass strip.
- ◎ Inward opening window screen adopts a special quick-detachable hinge and two-point lock.
- ◎ The outer frame, conversion frame, and sash are all designed with extruded aluminum injection corner code.
- ◎ Triple tempered glass is optional.
- ◎ The solid glass pressure line is designed as a bevel pressure line.





HYGP85 SYSTEM WINDOW



PRODUCT CONFIGURATION

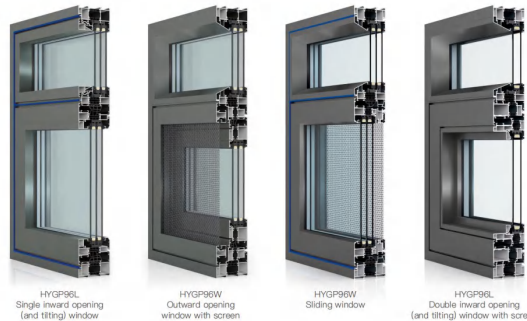
Item Name:	Inward opening window	Outward opening window	Casement door
Against the Wall Width:	85mm	85mm	85mm
Profile Thickness:	1.8mm	1.8mm	Frame 1.8mm, sash 2.2mm
Sash Visible Surface Size:	62.5mm	82mm	93mm
Insulation Strip Width:	25mm/ Double inward opening sash 14.8mm	25mm	25mm
Glass:	5+19A+5 or 5+20A+5 Optional tempered glass		



PRODUCT ADVANTAGE

- ① The glass notches of this structure are designed to be glue-free, and the opening position is sealed with three-stage strips to separate the watertight cavity from the airtight cavity.
- ② The outer frame has three drainage modes: hidden drainage, high-performance drainage, and floor drain drainage. It uses water pressure to drain water, has smooth drainage, and beautiful appearance.
- ③ The outer frame, conversion frame, and sash all adopt an integrated glue-injected corner code design.
- ④ The angle-forming flat steel sheets used are all 304 stainless steel glue-injected steel sheets.
- ⑤ The indoor and outdoor frame sash are flush.
- ⑥ Glass installation direction: The opening position uses a conversion frame, all pressure lines are indoors, and the glass is installed from indoors to ensure the personal safety of construction workers.
- ⑦ The small window screens of double inward-opening windows and micro-ventilation windows and the PT screens of outward-opening windows are both dual-purpose screens, and both can be installed with stainless steel mesh or high-transparency mesh.
- ⑧ Fixed-position bevel pressure lines, simple and beautiful.
- ⑨ The pressure lines of double inward-opening sashes are external for better the appearance.
- ⑩ The thermal insulation outward casement doors and inward casement doors in this series can be single-opening door, double-opening door, door with threshold, door without threshold, and so on.
- ⑪ This series can be made into double inward-opening window with screen, outward-opening window with PT screen, micro-ventilation window with screen, outward casement door, inward casement door, and so on.

HYGP96 SYSTEM WINDOW



HYGP96L Single inward opening (and tilting) window
 HYGP96W Outward opening window with screen
 HYGP96W Sliding window
 HYGP96L Double inward opening (and tilting) window with screen

PRODUCT CONFIGURATION

Item Name:	Inward opening window	Outward opening window	Inward/ Outward casement door
Against the Wall Width:	96mm	96mm	96mm
Profile Thickness:	2.0mm	2.0mm	Frame 2.2mm, sash 2.2mm
Sash Visible Surface Size:	62.5mm	82mm	93mm
Insulation Strip Width:	35.3mm/ Double inward opening sash 25mm	35.3mm	35.3mm
Glass:	5+20A+5 Optional double tempered glass or 5+12A+5+12A+5 triple tempered glass		



HYGP96L Double inward opening micro-ventilation window with screen
 HYGP96M Outward casement door
 HYGP96M Inward casement door

PRODUCT ADVANTAGE

- ① The glass notches of this structure are designed to be glue-free (EPDM is used inside the glass, and EPDM foamed composite soft and hard co-extruded strips are used outside the glass), and the opening position is sealed with three-stage strips to separate the watertight cavity from the airtight cavity.
- ② The outer frame has three drainage modes: hidden drainage, high-performance drainage, and floor drain drainage. It uses water pressure to drain water, has smooth drainage, and beautiful appearance.
- ③ The outer frame, conversion frame, and sash all adopt an integrated glue-injected corner code design.
- ④ The angle-forming flat steel sheets used are all 304 stainless steel glue-injected steel sheets.
- ⑤ The indoor and outdoor frame sash are flush.
- ⑥ Glass installation direction: The opening position uses a conversion frame, all pressure lines are indoors, and the glass is installed from indoors to ensure the personal safety of construction workers.
- ⑦ The small window screens of double inward-opening windows and micro-ventilation windows and the PT screens of outward-opening windows are both dual-purpose screens, and both can be installed with stainless steel mesh or high-transparency mesh.
- ⑧ Fixed-position bevel pressure lines, simple and beautiful.
- ⑨ The pressure lines of double inward-opening sashes are external for better the appearance.
- ⑩ The thermal insulation outward casement doors and inward casement doors in this series can be single-opening door, double-opening door, door with threshold, door without threshold, and so on.
- ⑪ This series can be made into double inward-opening window with screen, outward-opening window with PT screen, micro-ventilation window with screen, outward casement door, inward casement door, and so on.





HYGP102 TILT AND TURN WINDOW



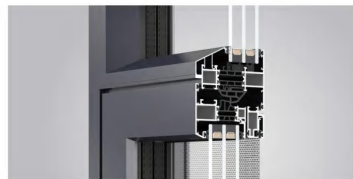
HYGP102
Double inward opening (and tilting)
window with screen

PRODUCT CONFIGURATION

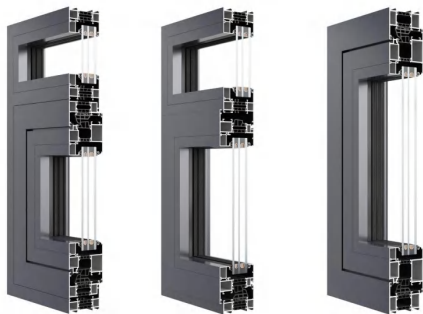
Item Name : HYGP102 Tilt and turn window	Insulation Strip Width: 40mm
Against the Wall Width: 102mm	Glass: 5+20A+5 or 5+12A+5+12A+5 Optional
Profile Thickness: 2.0mm	Opening Mode : Inward opening/tilt window, double inward opening window, inward opening door, outward opening door, and sliding window
Sash Visible Surface Size :	Outward-opening window 79mm, double-inward-opening window 62.5mm, inward-opening window 65.5mm

PRODUCT ADVANTAGE

- ◎ The HYGP102 series inward-turning and tilting windows are thermally insulated aluminum alloy casement windows designed to meet the latest national standard, GB8478-2020. Using the 102 series base profile, these windows are modified with insulation strips and auxiliary profiles to create multiple series and opening configurations.
- ◎ The insulation strips in this system are perfectly aligned, aligning the overall temperature profile of the windows and doors, improving overall thermal insulation performance.
- ◎ The glass sash hardware mounting notches for the opening position utilize a 14mm wide notch on the frame and a 20C groove on the sash. The hardware components offer strong versatility.
- ◎ The glass notches in this structure are designed with a glue-free stripping process (EPDM is used inside the glass, and EPDM foam composite soft-hard co-extruded stripping is used outside the glass, significantly increasing the amount of glue extruded outside the glass). The opening is sealed with three strips, separating the watertight and airtight chambers.
- ◎ The outer frame is available with either a concealed drain frame or a floor drain frame.
- ◎ The outer frame, transfer frame, and sash all feature integrated glue-injected corner brackets.
- ◎ The flattened corner steel sheets used are all 304 stainless steel with glue injection.
- ◎ The inner sash is flush with the outer frame: both the interior and exterior frames are flush.
- ◎ The fixings are available with either beveled or full-frame squared. The beveled edge offers a simple and aesthetically pleasing design, while the full-frame squared edge offers a strong, defined appearance.



HYGP75C ENGINEERING WINDOW



HYGP75C
Outward-opening window
with conversion frame

HYGP75C Inward
opening (and tilting) window

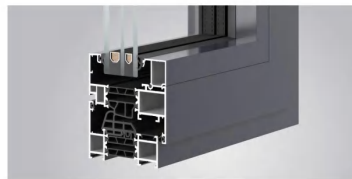
HYGP75C-Four-frame
outward-opening door

PRODUCT CONFIGURATION

Item Name : HYGP75C Engineering windows	Insulation Strip Width: 35.3/45.3mm
Against the Wall Width: 75/85mm	Glass: 5+27A+5 or 5+15A+5 or 5+15A+5+15A+5 etc.
Profile Thickness: 1.8mm	Opening Mode : Single outward-opening window, single inward-opening window, inward-opening door, outward-opening door
Sash Visible Surface Size : Outward opening window 85.5mm / Inward opening window 72.5mm / Outward opening door 96mm	

PRODUCT ADVANTAGE

- ① This casement system is designed with a systematic approach and can accommodate outward-opening window, inward-opening window, tilt-and-turn window, and casement door.
- ② The thermally insulated cavity design enhances frame rigidity, improves deformation resistance, and enhances sound and thermal insulation.
- ③ The hardware mounting notches for the glass sashes in the opening position utilize a 14mm wide notch in the frame and a 14.8mm C slot in the sash. Dedicated built-in hinges are used.
- ④ The glass notches in this structure utilize a glue-free stripping process (EPDM is used on the inner glass and EPDM foam composite soft-hard co-extruded stripping on the outer glass, significantly increasing the amount of outer glass stripping extruded). The opening position is sealed with three strips, separating the watertight and airtight cavities.
- ⑤ The outer frame features high-energy drainage or floor drains to prevent rainwater backflow and whistling noise.
- ⑥ The frame and sash are not flush, allowing the sash to be 10mm higher than the frame, resulting in a thicker sash.
- ⑦ Glass Installation Direction: The opening position utilizes a transfer frame, with all pressure lines located indoors. Glass is installed from the interior, ensuring the safety of construction workers.





HYGP78 SYSTEM WINDOW



HYGP78L
Double inward opening
(and tilting) window

HYGPTBW Outward
casement window

HYGP78L Inward
opening (and tilting) window

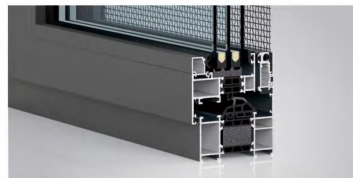
HYGP78M
Outward casement door

PRODUCT CONFIGURATION

Item Name:	Inward opening window	Outward opening window	Outward casement door
Against the Wall Width:	78mm	78mm	78mm
Profile Thickness:	1.6mm	1.6mm	2.0mm
Sash Visible Surface Size:	Double inward opening window 59.5mm or 60mm/ Single inward window 70.5mm	85.5mm	96.5mm
Insulation Strip Width:	Double inward opening 25mm/ Single inward opening 35.3mm	35.3mm	35.3mm
Glass:	5+19A+5 or 5+27A+5 Optional double tempered glass or 5+9A+5+12A+5 triple tempered glass Note: The glass notch of the double inward opening glass sash is 48.2mm, and 5+12A+5+12A+5 triple tempered glass can be installed.		

PRODUCT ADVANTAGE

- ① The glass notches of this structure are designed to be glue-free, and the opening position is sealed with three-stage strips to separate the watertight cavity from the airtight cavity.
- ② The outer frame adopts hidden drainage design, which utilizes water pressure to drain water, with smooth drainage and beautiful appearance.
- ③ The outer frame, conversion frame, and sash all adopt an integrated glue-injected corner code design.
- ④ The angle-forming flat steel sheets used are all 304 stainless steel glue-injected steel sheets.
- ⑤ The inner sash and the outer frame flush form: the outward sash and the outer frame are flat inside and not flat outside, while the inward sash and the outer frame are flat outside and not flat inside.
- ⑥ Double inward opening sash has two methods: external pressure line and internal pressure line, and the external pressure line is more beautiful.
- ⑦ Double inward opening sash small screen with magnetic strip, with stainless steel mesh and high-transparency mesh dual-use screen options.
- ⑧ This series can be used for outward casement windows, external top-hung windows, inward casement windows, tilt and turn windows, single outward casement doors, double outward casement doors, double inward opening windows with screens, etc. Among them, the outward opening window can use the conversion frame or not, the casement door can be selected with or without the threshold door, and the casement door can adopt the middle horizontal solution.



CASEMENT WINDOWS SERIES



HIGH SOUND
INSULATION



HIGH AIR
TIGHTNESS



STRONG WATER
TIGHTNESS



THERMAL
INSULATION



WIND PRESSURE
RESISTANCE



GOOD
SUNSHADE



ANTI-FOG AND
ANTI-FOULING



ANTI-THEFT AND
ANTI-PRYING



HYGP110F CASEMENT WINDOW WITH SCREEN



HYGP110F
Outward-opening casement
window with screen



HYGP110F
Low threshold double door
with screen integrated

PRODUCT CONFIGURATION

Item Name : HYGP110F Casement window with screen

Against the Wall Width : 110mm

Insulation Strip Width: Frame 35.3mm

Profile Thickness: 1.8mm

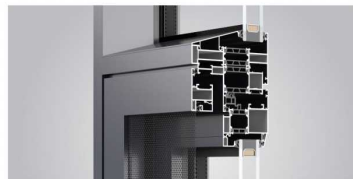
Glass : 5+20A+5 Double tempered glass

Sash Visible Surface Size : Outward-opening window sash 68mm

Opening Mode : Glass sash opens outwards,
screen sash opens inwards

PRODUCT ADVANTAGE

- It is a product of outward-opening window with screen built with systematic thinking.
- The insulation strips of this system are completely aligned, so that the overall isotherms of doors and windows are in the same plane, which can improve the thermal insulation performance of casement windows.
- The hardware installation slot position of the glass sash at the opening position adopts 14mm wide slot on frame and 14.8mm C slot on sash design, and uses a dedicated built-in hinge.
- The glass notches of this structure are designed to be glue-free (EPDM is used inside the glass), and EPDM foamed composite soft and hard co-extruded strips are used outside the glass), and the opening position is sealed with three-stage strips to separate the watertight cavity from the airtight cavity.
- The outer frame adopts high-energy drainage or floor drain drainage design to prevent rainwater backflow and whistling.
- The frame and sash are flush, which is beautiful and generous.
- Glass installation direction: The opening position uses a conversion frame, all pressure lines are indoors, and the glass is installed from indoors to ensure the personal safety of construction workers.
- The beveled edge pressing line design has a unique artistic outline and a visually fashionable structure, which increases the ability to resist deformation and is stronger. Small square pressing line can also be selected.



HYGP116E CASEMENT WINDOW WITH SCREEN



HYGP116E
Outward-opening window
with integrated screen



HYGP116Z
Ultra-slim outward-opening
window with integrated screen



HYGP116E
Low-threshold double opening
door with integrated screen

PRODUCT CONFIGURATION

Item Name : HYGP116E Outward opening window with screen

Against the Wall Width: 116mm

Insulation Strip Width: Outer frame 35mm, glass sash 30mm

Profile Thickness: 2.0mm

Glass: Standard 5mm tempered glass,
hollow can be adapted to 18A, 22A, 25A, or 27A

Sash Visible Surface Size : Glass sash 78mm,
screen sash 48.5mm

Opening Mode : Outward opening with screen, ultra slim frame

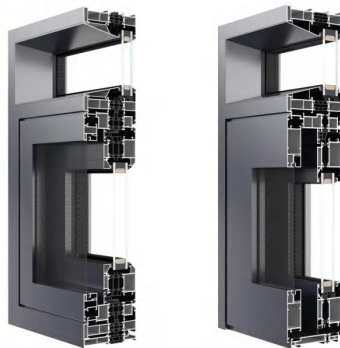
PRODUCT ADVANTAGE

- ① This series is a product created with a simple and fashionable style and systematic thinking.
- ② The main frame has multiple cavities and multiple bearing points, which further improves the safety and wind pressure resistance of the whole window.
- ③ It adopts a flush design inside and outside, which can be equipped with arc chamfer, and the screen sash can be equipped with high-transparency screen mesh.
- ④ The outer frame can adopt high-energy drainage or floor drain drainage. Installing a windproof drainage hole cover can solve the whistling sound caused by hidden drainage.
- ⑤ The outer frame, conversion frame, and sash are all designed with glue injection corners.
- ⑥ The insulation strips of the outer frame and conversion frame are 35mm wide, and the sash is 30mm wide. The insulation strips are designed as vertical isotherms.
- ⑦ The glass sash adopts a three-stage sealing structure. The glass adopts a glue-free strip process (EPDM is used inside the glass, and EPDM foamed composite soft and hard co-extruded strips are used outside the glass), which greatly increases the extrusion amount of the outer glass strip.
- ⑧ A double-high handle design can be adopted, and the height of the glass sash handle does not exceed 42mm.
- ⑨ A large bevel pressure line or a square pressure line can be selected.





HYGP120E HIGH PERFORMANCE CASEMENT WINDOWS

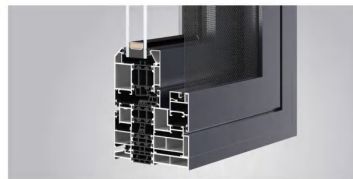


HYGP120E
Big diagonal pressure line on two
glass panes with fixed outer frame

HYGP120E
Low threshold double opening
door with integrated screen

PRODUCT ADVANTAGE

- ◎ The 120E is a system-based, integrated window screen product with an exterior-opening design.
- ◎ The thermally insulated cavity design enhances frame rigidity, improves deformation resistance, and enhances sound and thermal insulation.
- ◎ The hardware mounting notches for the glass sash in the opening position utilize a 14mm wide notch in the frame and a 14.8mm wide notch in the sash. Dedicated built-in hinges are used.
- ◎ The glass notches in this structure utilize a glue-free stripping process (EPDM is used on the inner glass and EPDM foam composite soft-hard co-extruded stripping on the outer glass, significantly increasing the amount of outer glass stripping extruded). The opening position is sealed with three strips, separating the watertight and airtight chambers.
- ◎ The outer frame features high-energy drainage or floor drains to prevent rainwater backflow and whistling.
- ◎ The frame and sash are flush, creating an elegant and refined look.
- ◎ The beveled edge contour design creates a unique, artistic, and stylish appearance, enhancing deformation resistance.



PRODUCT CONFIGURATION

Item Name : HYGP120E Window with integrated screen

Against the Wall Width : 120mm

Insulation Strip Width : 35.3mm

Profile Thickness : 2.0mm

Glass : Window: 5+24A+5 Double tempered glass
Door: 5+20A+5 Double tempered glass

Sash Visible Surface Size : Outward-opening
window sash 78mm

Opening Mode : Outward opening window with screen integrated,
double inward opening, door with screen integrated

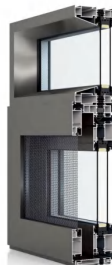
HYGP125H WINDOW SCREEN INTEGRATED



HYGP125H
Insulation inward opening
window with screen



HYGP125H
Outward opening window with screen



HYGP125H
Casement door

PRODUCT CONFIGURATION

Item Name: Double inward opening window with screen	Outward opening window with screen	Outward opening door with screen
Against the Wall Width: 31/51mm	115mm	115mm
Profile Thickness: 2.0mm	2.0mm	2.0mm
Sash Visible Surface Size: 96.5mm	79.5mm	96.5mm
Insulation Strip Width: 25mm	25mm	25mm
Class: 5+20A+5/5+12A+5+12A+5		

PRODUCT ADVANTAGE

① The insulation strips of this system are completely aligned, so that the overall isotherms of doors and windows are in the same plane, which can improve the thermal insulation performance of the windows.

② This series can be made into outward casement window with screen, double inward-opening window with screen, single outward casement door with screen, double outward casement door with screen, and so on.

③ The outer frame adopts hidden drainage design.

④ The opening position is sealed with three-stage strips to separate the watertight cavity from the airtight cavity.

⑤ The outward-opening window with screen and the double inward-opening window with screen are both designed with inner and outer flat frames. The outward-opening door with screen is flat on the outside but not on the inside (that is, the outward-opening door sash is flush with the outer frame on the outside, and the inward-opening screen sash is not flush with the outer frame on the inside. In this case, the glass door sash hinge must use a special hinge for flushing the frame sash).

⑥ The outer frame, conversion frame, and sash all adopt an integrated glue-injected corner code design.

⑦ The angle-forming flat steel sheets used are all 304 stainless steel glue-injected steel sheets.

⑧ The screen frame and the glass sash conversion frame are designed to be split, which makes it easier for customers to choose whether to install indoor stainless steel mesh screens or invisible screens.

⑨ There are two options for the guardrails in the open position: fixed guardrails and operable guardrails.

⑩ You can choose to install stainless steel screen or high-transparency screen.

⑪ Glass installation direction: The opening position uses a conversion frame, all pressure lines are indoors, and the glass is installed from indoors to ensure the personal safety of construction workers.

⑫ The glass adopts a glue-free strip process (EPDM is used inside the glass, and EPDM foamed composite soft and hard co-extruded strips are used outside the glass).

⑬ This series of fixed positions has three options for selection: small square pressure line, generous pressure line, and large oblique pressure line.





HYGT123N BUILT-IN HARDWARE CASEMENT WINDOW WITH SCREEN



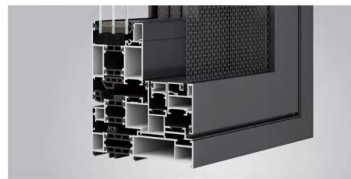
HYGT123N Built-in hardware and outward opening window with screen

PRODUCT ADVANTAGE

- ① The thickness of the whole window is 1.8mm. The style is medium-narrow. The width of the mullion is 25mm when viewed indoors, and the frame is 26.5mm when viewed indoors. The frame and the mullion are in golden ratio, and the visual effect is simple and beautiful. If the glass is large, it can also be matched with a reinforced mullion. The reinforced mullion adopts an elliptical design, which increases the wind pressure resistance of the whole window and makes the visual effect more beautiful.
- ② The whole window frame, sash, mullion conversion frame and the 304 stainless steel flat steel sheet for the corner group all adopt effective glue injection technology, making the whole window more stable and firm.
- ③ The fixed glass notches of this series are 38mm and 49.3mm, which can be installed with 5+19A+5 double tempered glass and 5+12A+5+12A+5 triple tempered glass respectively. A variety of glass specifications are matched, suitable for all application scenarios and window types.
- ④ The screen sash adopts a quick disassembly method, which is more flexible and convenient to disassemble and clean. In addition, the screen can be equipped with high-transparency screen and stainless steel screen, with multiple choices. The corners of the screen sash are made of customized plastic parts with rounded corners, so there is no need to worry about accidentally hitting the head.
- ⑤ The pressure lines are available in various styles, such as oblique pressure lines and square pressure lines, which are suitable for the aesthetics of different people.
- ⑥ The anti-theft grid can be fixed or opened or not installed, which is flexible and convenient. If you choose not to install the anti-theft grid, there is a professional slotless design, which looks flat and beautiful.
- ⑦ The built-in hinge design of this window makes the hollow of the fixed glass and the insulation strip at the opening position completely aligned, realizing the true isotherm alignment and improving the thermal insulation performance of the whole window. In addition, through the patented design, the hinge at the opening position is built-in, and the hinge will not be eroded by external rainwater, which greatly improves the service life of the hinge and is safer.
- ⑧ The whole window glass adopts the glue strip technology without glue inside and outside (EPDM is used inside the glass and EPDM foamed composite soft and hard co-extruded glue strips are used outside the glass), which greatly increases the extrusion amount of the glue strips outside the glass. All glass is installed indoors to ensure the personal safety of construction workers. The opening position is sealed with multiple rubber strips to separate the watertight cavity from the airtight cavity, greatly improving the airtightness and watertightness of the whole window.
- ⑨ Break through the bottleneck of the industry with built-in hinges.

PRODUCT CONFIGURATION

Item Name : HYGT123N Built-in hardware and outward opening window with screen	Insulation Strip Width : Frame 35.3mm\ Sash 25mm
Against the Wall Width : 123.9mm	Glass : 5+19A+5/5+30A+5 (Notch 40mm)\ Triple tempered glass is optional.
Profile Thickness : 1.8mm	Opening Mode : Outward opening casement window with screen
Sash Visible Surface Size :	Glass sash thickness 64.4mm\ Glass sash surface width 81mm Screen sash thickness 30mm\ Screen sash surface width 48.5mm



SLIDING DOORS AND WINDOWS



HIGH SOUND
INSULATION



HIGH AIR
TIGHTNESS



STRONG WATER
TIGHTNESS



THERMAL
INSULATION



WIND PRESSURE
RESISTANCE



GOOD
SUNSHADE



ANTI-FOG AND
ANTI-POLLUTION



ANTI-THEFT AND
ANTI-HACKING

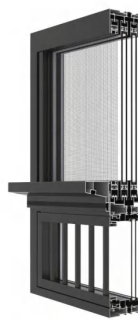
HYGT125C SIX-TRACK SLIDING WINDOW



HYGT125C Four sashes
with screen on bottom



HYGT125C Two sashes
with screen on top



HYGT125C Big middle and
small side with screen on top

PRODUCT CONFIGURATION

Item Name : HYGT125C Six-track sliding window

Against the Wall Width: 125mm

Insulation Strip Width: Outer frame 20mm, Sash 10mm

Profile Thickness: Edge seal/ track/ sash material 1.8mm,
lower track 2.2mm

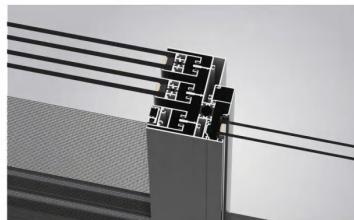
Glass: 5+15A+5

Sash Visible Surface Size : 31mm

Opening Mode : Two sash with one screen, four sashes and two
screens, full glass, can be fixed on top or bottom

PRODUCT ADVANTAGE

- ① This series of narrow-sash heat-insulating sliding windows adopts a simple and fashionable style and is built with systematic thinking.
- ② This series can be opened in two-sash sliding, four-sash middle-opening sliding and other forms.
- ③ The lower track can be made into a sunken drainage system.
- ④ The outer frame is spliced with 45-degree angle code, no waterproof end pad is required. The glass sash is spliced with 90-degree screws, and the glass is caulked with internal glue. The flat and hook sections need to put the inner sash into the outer frame before installation to ensure that the sash is not easy to fall off.
- ⑤ The assembly form of the sash and frame is: frame-wrapped sash structure, the indoor side of the top outer frame is made into a split retaining edge, which facilitates the installation of the sash while ensuring the narrow edge effect of the outer frame.
- ⑥ The lower track adopts a double-row ground wheel structure.
- ⑦ The angle-grouping flat steel sheets used in this system are all 304 stainless steel glue-injected steel sheets.
- ⑧ This series of profile structures adopts customized side-mounted concealed world locks.





HYGT125X SUSPENSION HEAT-INSULATING SLIDING WINDOW



HYGT125X Suspension
heat-insulating sliding window

PRODUCT CONFIGURATION

Item Name : HYGT125X Suspension heat-insulating sliding window

Against the Wall Width : 125mm

Insulation Strip Width: Frame 20mm

Profile Thickness: Frame 1.8mm,lower 2.2mm

Glass: 5+15A+5

Sash Visible Surface Size : 34mm

Opening Mode : Three-track two-glass with one screen,three-track four-glass with two screens, or Three-track one-glass

PRODUCT ADVANTAGE

① HYGT125X suspended heat-insulated sliding window adopts simple and fashionable style, the most popular suspended linear track way, and are built with systematic thinking.

② The lower track adopts sinking stepped drainage + 3 stainless steel rails + double retaining edges, which are waterproof and drainage. The sinking stepped drainage design uses water pressure to drain water, which is smooth and beautiful in appearance. The lower track can be added with anti-handrail surface tube or lower track retaining edge.

③ The multi-layer siliconized strip design blocks strong winds layer by layer, and is insect-proof, dust-proof and waterproof.

④ Adding windproof soft rubber sealing parts at the overlapping places of the upper and lower tracks corresponding to the indoor and outdoor sash hooks can increase the sealing performance of the sliding window.

⑤ The upper track is equipped with an anti-swing wheel guide groove. After the anti-swing wheel is installed on the sliding sash, its sliding stability is increased and the shaking of the sliding sash is reduced.

⑥ This series adopts a small square pressure line structure design when fixing the upper and lower positions. The clothes drying rack is fixed at the bottom.

⑦ Since this series has a three-track structure, its screen sash can be installed on the indoor side or the outdoor side, and all three sashes can be glass sashes.

⑧ The glue-free strip process is adopted (EPDM is used inside the glass, and EPDM foam composite soft and hard co-extruded strips are used outside the glass, which greatly increases the extrusion volume of the glass outer strip).

⑨ Hardware system:

1.The HYGT125X suspended heat-insulated sliding window use customized side-mounted automatic locks and lock hooks, and the glass sash pulleys use 15mm wide x 20 (17) mm high single-row four wheels, single-row six wheels, single-row eight wheels, and single-row ten wheels.

2.The handrail surface tube can be equipped with the photoelectric intelligent sliding system opening hardware.



HYGT125M LIFTING SLIDING DOOR



HYGT125M One sash
lifting and one sliding

HYGT125M Fixed width and narrow
width with lift and push-pull combination

HYGT125M One fixed
one lift and push-pull

PRODUCT CONFIGURATION

Item Name : HYGT125M Lifting sliding door

Against the Wall Width: 125mm

Insulation Strip Width: Outer frame 28mm, sash 10mm

Profile Thickness: Edge seal 2.0mm, track 2.2mm,
75 wide sash 2.2mm, 42 narrow sash 3.0mm

Glass: 6+20A+6

Sash Visible Surface Size : Wide sash 75mm,
narrow sash 42mm

Opening Mode : Full-width sash, wide and narrow matching sashes,
two-track two-sash, two-track four-sash

PRODUCT ADVANTAGE

① This product series is a light-duty heat-insulated lifting sliding door, which is a square medium-narrow style and is built with systematic thinking.

② It can be made into full-width sash, wide and narrow matching sashes, two-track two-sash, two-track four-sash.

③ The outer frame adopts 90-degree splicing, all 75 sashes adopt 45-degree glue injection corner assembly process, and 75 + 42 wide and narrow matching sashes adopt 45-degree and special 90-degree connector glue injection corners assembly process to ensure corner strength.

④ It adopts lower track with high waterproof, which can be used as lifting sliding door or conventional sliding door. The high waterproof lower track adopts a concealed drainage structure design, which uses water pressure to drain water, has smooth drainage and beautiful appearance.

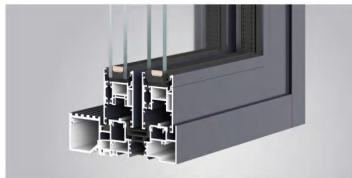
⑤ The upper rail of this series is equipped with a guide groove with anti-sway, and the installation of a column anti-sway wheel can reduce the swing and shaking of the door sash during the sliding process.

⑥ The door sash adopts a multi-layer strip sealing design, and an automatically rebounding windproof block is added between the two guide grooves of the upper track, and a soft rubber windproof block is added between the two guide tracks of the lower track, which blocks strong winds layer by layer, prevents insects, dust and water.

⑦ When the glass sash is installed with lifting accessories, it can be completely sealed with EPDM strips to increase its overall sealing performance.

⑧ The upper and lower hook cover sealing parts are added at the upper and lower ends of the sashes hook cover to increase its sealing performance and aesthetics.

⑨ The glass of this series adopts a glue-free strip process (EPDM inside the glass, soft and hard co-extruded strips outside the glass, which greatly increases the overlap of the outer glass strip).





HYGT189M LIFTING SLIDING DOOR



HYGT189M
Three-track two-sash with
fixed width and narrow rails

HYGT189M
Three-track two-sash with fixed
width and narrow high and low rails

HYGT189M
Three-track four-sash
with center lift

PRODUCT CONFIGURATION

Item Name : HYGT189M Lifting sliding door

Against the Wall Width : 189mm

Insulation Strip Width : Outer frame 28mm, sash 10mm

Profile Thickness : Edge seal 2.0mm, track 2.2mm,
75 wide sash 2.2mm, 42 narrow sash 3.0mm

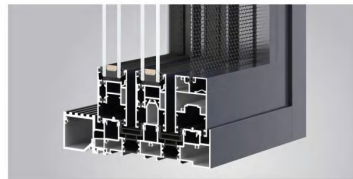
Glass : 6+20A+6

Sash Visible Surface Size : Wide sash 75mm, narrow sash 42mm

Opening Mode : Full-width sash, wide-narrow matching,
two-track two-glass one-mesh six-track
four-glass two-mesh, three-track full-glass

PRODUCT ADVANTAGE

- ⊙ This product series is a light-duty heat-insulated lifting sliding door, which is a square medium-narrow style and is built with systematic thinking.
- ⊙ It can be made into full width sash, wide and narrow combination, two tracks two glass and one screen, six tracks four glass and two screen, three tracks full glass. When matching with screen sash, you can choose indoor screen sash or outdoor screen sash.
- ⊙ The outer frame adopts 90-degree splicing, all 75 sashes adopt 45-degree glue injection corner assembly process, and 75 + 42 wide and narrow matching sashes adopt 45-degree and special 90-degree connector glue injection corners assembly process to ensure corner strength.
- ⊙ It adopts lower track with high waterproof, which can be used as lifting sliding door or conventional sliding door. The high waterproof lower track adopts a concealed drainage structure design, which uses water pressure to drain water, has smooth drainage and beautiful appearance.
- ⊙ The upper rail of this series is equipped with a guide groove with anti-sway, and the installation of a column anti-sway wheel can reduce the swing and shaking of the door sash during the sliding process.
- ⊙ The door sash adopts a multi-layer strip sealing design, and an automatically rebounding windproof block is added between the two guide grooves of the upper track, and a soft rubber windproof block is added between the two guide tracks of the lower track, which blocks strong winds layer by layer, prevents insects, dust and water.
- ⊙ When the glass sash is installed with lifting accessories, it can be completely sealed with EPDM strips to increase its overall sealing performance.
- ⊙ The upper and lower hook cover sealing parts are added at the upper and lower ends of the sashes hook cover to increase its sealing performance and aesthetics.
- ⊙ The glass of this series adopts a glue-free strip process (EPDM inside the glass, soft and hard co-extruded strips outside the glass, which greatly increases the overlap of the outer glass strip).



HYGT125Z PANORAMIC SLIDING DOOR AND WINDOW



HYGT125Z Two tracks, two openings
one fixed and one movable



HYGT125Z Two tracks and two
sashes with bottom fixing

PRODUCT CONFIGURATION

Item Name : HYGT125Z Panoramic sliding door and window

Against the Wall Width: 125mm

Insulation Strip Width: 25.3mm

Profile Thickness: Outer frame 2.0mm, flat section 3.0mm,
hook section 3.5mm, inner sash 2.5mm

Glass: 6+23A+6, 8+19A+8, 10+15A+10

Sash Visible Surface Size : 30.5mm

Opening Mode : Two open two movable, two open one fixed and
one movable, four open four movable, four open two
fixed and two movable, column-free corner window

PRODUCT ADVANTAGE

- ① The panoramic heat-insulated sliding door and window of this product series is an American-style extremely narrow heat-insulated sliding door and window.
- ② The outer frame has no hidden drainage structure, and the outer frame can adopt high-energy drainage or floor drain drainage. Installing a windproof drainage hole cover can solve the whistling sound caused by hidden drainage.
- ③ The outer frame is spliced with 45-degree angle code, no waterproof end pad is required, the glass sash is spliced with 90-degree screws, and the glass is caulked with internal glue. The flat and hook section needs to put the inner sash into the outer frame before installation to ensure that the sash is not easy to fall off.
- ④ The top outer frame retaining edge is equipped with inside and outside dislocation anti-swing plastic parts with an interval of 300-400mm to ensure that the movable sash does not swing.
- ⑤ The outer frame adopts extruded aluminum injection angle code design.



HYQJ120C PANORAMIC SLIDING WINDOW



HYQJ120C
Two tracks, one fixed and one movable

PRODUCT CONFIGURATION

Item Name : HYQJ120C Panoramic sliding window

Against the Wall Width: 120mm

Insulation Strip Width: Frame 20mm

Profile Thickness: The main load-bearing profile 2.0mm

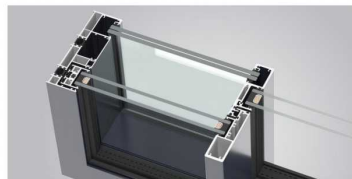
Glass: 6+20A+6

Sash Visible Surface Size : 30mm

Opening Mode : One fixed and one movable, two fixed and two movable, fixed in the middle and movable on both sides

PRODUCT ADVANTAGE

- ① The HYQJ120C series panoramic thermal insulation sliding windows feature narrow-frame, American-style windows, designed with a systematic approach. The exterior frame utilizes a double-thermal break structure.
- ② The sliding exterior frame utilizes 90-degree joints; the sash utilizes 90-degree end-milling screw joints.
- ③ The lower rail features a combined sunken drainage system, preventing the lower pulley from becoming submerged in water. This utilizes water pressure for smooth drainage, aesthetically pleasing appearance, and increased lower pulley life.
- ④ The lower rail features a double-track design with double-row wheels for smoother door opening and closing.
- ⑤ The door features a multi-row seal design, with specialized sealing attachments above and below the overlapping interior and exterior sashes to provide layered protection against strong winds, insects, dust, and water.
- ⑥ Customized upper anti-sway wheels reduce door sliding.
- ⑦ The upper rails also feature hidden rails for a beautiful, symmetrical appearance.
- ⑧ Automatic locking is provided for push-pull operation.
- ⑨ This series of glass utilizes internal structural adhesive and external sealing or pressure-bonding strips to enhance the integrity between the glass and the sash.
- ⑩ Thickened and reinforced stiles increase overall window strength.
- ⑪ Diverse opening and fixing options and a high-load-bearing design meet the needs of applications from small-opening sliding windows to extra-large sliding doors. The one-fixed-one-push opening mechanism provides greater transparency and a larger area of daylight.
- ⑫ Glass guardrails utilize thickened laminated glass for enhanced visibility and safety.

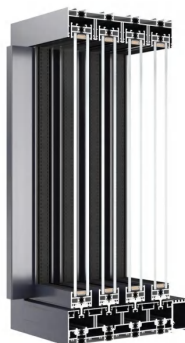




HYQJ150M PANORAMIC SLIDING DOOR



HYQJ150M
Three tracks, three open
one fixed, two movable



HYQJ150M
Four tracks, four open, four movable

PRODUCT CONFIGURATION

Item Name : HYQJ150M Panoramic heat-insulated sliding door

Against the Wall Width: 150mm Insulation Strip Width: Frame 22mm/16mm

Profile Thickness: 2.2-3.5mm Glass: 6+27A+6 Double tempered glass, 8+27A+8 double tempered glass,
10+23A+10 double tempered glass, 12+18A+12 double tempered glass,
15+18A+15 double tempered glass

Sash Visible Surface Size : 28mm Opening Mode : Two open one fixed and one movable, four open two fixed and two movable,
three open two fixed and one movable, and other opening forms.
Magnetic suspension electric push-pull opening is possible.

PRODUCT ADVANTAGE

① HYQJ150M series panoramic heat-insulated sliding door is a narrow-edge American style panoramic product built with systematic thinking.

② The lower track adopts a combined sinking drainage, which is conducive to the lower pulley not being easily immersed in water, using water pressure to drain water, smooth drainage, beautiful appearance, and increasing the service life of the lower pulley.

③ The lower track adopts a double-track design, and the glass sash adopts an ultra-load-bearing double-row wheel to make the door open and close more smoothly.

④ The door sash adopts a multi-strip sealing design, and the upper and lower overlapping parts of the indoor and outdoor sashes are equipped with special sealing accessories to block strong winds, insect-proof, dust-proof and water-proof.

⑤ The upper and lower hook cover sealing parts are added at both ends of the sash hook cover to increase its sealing performance and aesthetics.

⑥ The upper track is equipped with an anti-sway guide groove, and the door sash can use a rear-mounted adjustable anti-sway wheel to reduce the swing and shaking of the door sash during the sliding process.

⑦ Replace the upper top frame with an intelligent opening upper track, which can be opened by magnetic suspension electric push-pull.

⑧ The glass of this series adopts the process of internal structural glue and external sealing or pressing rubber strips to increase the integrity between the glass and the sash.

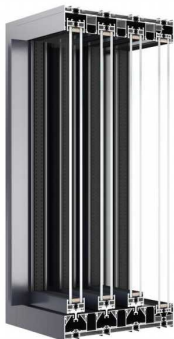
⑨ Hardware:
HYQJ150M series panoramic heat-insulated sliding doors use CSM double-point double-hook locks, which can be keyed on one side or both sides. The pulleys use customized double-row pulleys (reference standards for door selection: 300 kg/two groups, 500 kg/three groups, 800 kg/four groups, 1T/six groups), and the anti-sway wheels on the glass sashes use customized rear-mounted adjustable anti-sway wheels.



HYQJ175M PANORAMIC SLIDING DOOR



HYQJ175M
Three tracks, three open, one fixed, two movable



HYQJ175M
Four tracks, four open, three movable, one fixed

PRODUCT CONFIGURATION

Item Name : HYQJ175M Panoramic heat-insulated sliding door

Against the Wall Width: 175mm

Insulation Strip Width: Frame 22mm, Sash 16mm

Profile Thickness: 2.0-4.5mm

Glass: 6+27A+6, 8+27A+8, 10+23A+10, 12+19A+12

Sash Visible Surface Size : Frame 68mm/Upper and Lower Rail 68mm/
Mullion 45mm/Locking stile 40mm

Opening Mode : Two-track two-sash, two-tracks four-sash,
three-track three-sash, three-track six-sash

PRODUCT ADVANTAGE

◎ HYQJ175M series panoramic heat-insulated sliding door is a narrow-edge American style panoramic product built with systematic thinking.

◎ The lower track adopts a combined sinking drainage, which is conducive to the lower pulley not being easily immersed in water, using water pressure to drain water, smooth drainage, beautiful appearance, and increasing the service life of the lower pulley.

◎ The lower track adopts a double-track design, and the glass sash adopts an ultra-load-bearing double-row wheel to make the door open and close more smoothly.

◎ The door sash adopts a multi-strip sealing design, and the upper and lower overlapping parts of the indoor and outdoor sashes are equipped with special sealing accessories to block strong winds, insect-proof, dust-proof and water-proof.

◎ The upper and lower hook cover sealing parts are added at both ends of the sash hook cover to increase its sealing performance and aesthetics.

◎ The upper track is equipped with an anti-sway guide groove, and the door sash can use a rear-mounted adjustable anti-sway wheel to reduce the swing and shaking of the door sash during the sliding process.

◎ Replace the upper top frame with an intelligent opening upper track, which can be opened by magnetic suspension electric push-pull.

◎ The glass of this series adopts the process of internal structural glue and external sealing or pressing rubber strips to increase the integrity between the glass and the sash.

◎ Hardware:
HYQJ175M series panoramic heat-insulated sliding doors use OSM double-point double-hook locks, which can be keyed on one side or both sides. The pulleys use customized double-row pulleys (reference standards for door selection: 300 kg/two groups, 500 kg/three groups, 800 kg/four groups, 1T/six groups), and the anti-sway wheels on the glass sashes use customized rear-mounted adjustable anti-sway wheels.





HYTM128/190 SLIDING DOOR (NON-THERMAL BREAK)

HYTM128 Two-track
ordinary sliding door (60 Sash)HYTM128 Two-track
ordinary sliding door (75 Sash)HYTM190 Two-track
ordinary sliding door (60 Sash)HYTM190 Two-track
ordinary sliding door (75 Sash)

PRODUCT CONFIGURATION

Item Name: HYTM128 Two-track ordinary sliding door (60/75 Sash)	HYTM190 Three-track ordinary sliding door (60/75 Sash)
Against the Wall Width: 128mm	128mm
Profile Thickness: Frame 2.2mm, 60 Sash thickness 1.6mm, 75 Sash thickness 3.0mm	Frame 2.2mm, 60 Sash thickness 1.6mm, 75 Sash thickness 3.0mm
Sash Visible Surface Size: 60mm/75mm	60mm/75mm
Glass: 6+19A+6 Double tempered glass	6+19A+6 Double tempered glass
Opening Mode: Two-track two-sash, two-track four-sash	Three-track two-sash with one screen, three-track four-sash with two screens, or Three-track one-sash

PRODUCT ADVANTAGE

- ◎ This series has two types of low-level tracks and waterproof tracks, which can be selected according to needs. The waterproof lower track adopts stepped hidden drainage + stainless steel track + double retaining edge, which is waterproof and drainage in one go. The invisible drainage design uses water pressure to drain water, which is smooth and beautiful in appearance.
- ◎ The vertical side seal and the fixed horizontal frame, the upper and lower tracks are 90 degrees and milled and then screwed together. The fixed mullion uses special connectors to splice with the fixed horizontal frame and the upper and lower tracks, and the sash is spliced with 45-degree angle code screws.
- ◎ The multi-layer siliconized strip design blocks strong winds layer by layer, and is insect-proof, dust-proof and waterproof.
- ◎ The equal-height slide and unique isobaric cavity principle design ensure that there will be no water accumulation and leakage in the case of strong winds and rainstorms.
- ◎ The use of high-quality pulleys with ultra-load-bearing precision craftsmanship has higher strength and wear resistance, making doors and windows easy to push and pull, smoothly, and more flexible to open.
- ◎ Concealed upper and lower blocking parts are added at both ends of the sash hook cover to increase its sealing performance and aesthetics.
- ◎ The upper track is equipped with an anti-sway wheel guide groove. After the sliding sash is equipped with an anti-sway wheel, its sliding stability is increased and the swing of the sliding sash is reduced. A buffer anti-sway wheel can be installed.
- ◎ This series has two types of sashes with a face width of 60mm and 75mm. Among them, the 60mm face width sash is suitable for indoor doors, and the 75mm face width sash is suitable for outdoor use. It can be opened in two forms: ordinary sliding and lifting sliding.
- ◎ When this series needs to make a screen door, the stainless steel needs to be folded, and the screen auxiliary material is used to press the stainless steel mesh and fix it with screws.
- ◎ This series can be made into two-sash sliding, four-sash middle-open sliding, three-track three-sash and other opening forms.



HYGY120B TRANSLATING SIDE PRESSURE SLIDING DOOR AND WINDOW



HYGY120B Translating side pressure sliding door and window

PRODUCT CONFIGURATION

Item Name : HYGY120B Translating side pressure sliding door and window

Against the Wall Width: 120mm

Insulation Strip Width: 14.8mm

Profile Thickness: 1.8mm

Glass: 5+20A+5, 5+27A+5 or 5+9A+5+12A+5

Sash Visible Surface Size : 75mm or 64mm

Opening Mode : Two open one fixed and one movable, four open two fixed and two movable, three open two fixed and one movable, and other opening forms.

PRODUCT ADVANTAGE

① The HYGY120B series of sliding side pressure sealing insulation sliding doors and windows solve the pain points of inward-opening windows occupying indoor space, poor sealing performance of conventional sliding windows, and safety hazards of outward-opening windows. It is a product built with systematic thinking.

② The frame assembly of this series adopts 45-degree angle assembly like conventional casement windows, which can ensure overall stability.

③ The movable sash adopts special OSM C-groove translation and lateral compression hardware accessories, and adopts multi-locking point design to improve sealing performance.

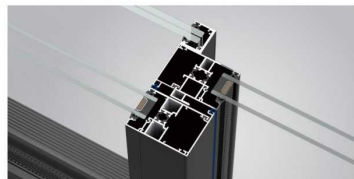
④ The connecting parts adopt card point connection, the handle rotates 180°, and the movable sash translates 6mm, so that the movable sash and the outer frame are laterally compressed and sealed. And the sliding opening and hardware load-bearing capacity of this accessory are better than those of drifting hardware.

⑤ In order to ensure that the side cover plate and the hook plate do not produce cold bridge phenomenon after dry assembly, they are all equipped with full-length rubber strips to separate, so as to improve the thermal insulation and heat sealing performance of the whole window.

⑥ This series can be equipped with inward opening screen, fixed screen, accordion screen, invisible rolled screen, glass guardrail, etc. on the outside of the movable sash.

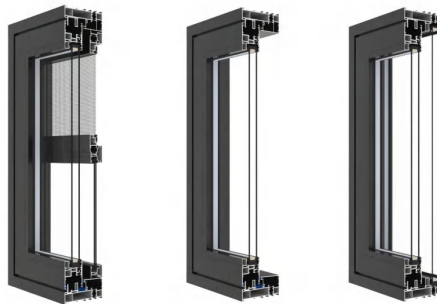
⑦ All glass adopts glue-free rubber strip technology (EPDM is used inside the glass, and EPDM foamed composite soft and hard co-extruded rubber strips are used outside the glass to greatly increase the extrusion amount of rubber strips outside the glass).

⑧ Hardware: Horman





HYG132A TRANSLATING SIDE PRESSURE SEALING SLIDING DOOR AND WINDOW



HYG132A Side pressure window
two small movable and one large fixed

HYG132A Side pressure window
two sides fixed and two middle movable

HYG132A Side pressure window
one fixed and one movable

PRODUCT CONFIGURATION

Item Name : HYG132A Translating side pressure sealing sliding door and window

Against the Wall Width: 132mm

Insulation Strip Width: Outer frame 14.8mm, sash 12mm

Profile Thickness: 2.2mm

Glass: 5+20A+5, 5+27A+5, 5+9A+5+12A+5 Optional

Sash Visible Surface Size : Conventional sash 75mm,
narrow sash 52mm

Opening Mode : One fixed and one movable,
two fixed and two movable, two fixed and one movable

PRODUCT ADVANTAGE

① The translating side pressure sealing insulation sliding doors and windows solves the pain points of inward-opening windows occupying indoor space, poor sealing performance of conventional sliding doors and windows, and potential safety hazards of outward-opening windows. It is a product built with systematic thinking.

② This series can be opened in different sliding forms, such as two openings and one fixed and one movable, four openings and two fixed and two movable, and three openings and two fixed and one movable. It can be fixed in upper, lower, side and other forms.

③ The frame assembly of this series adopts 45-degree angle assembly like conventional casement windows, which can ensure overall stability.

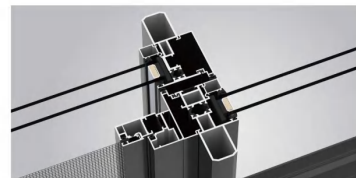
④ The mullion and fixed mullion of this series are spliced with 90-degree milling tenon screws of the mullion connector. Conventional glass sashes are spliced with 45-degree angle codes, and wide and narrow glass sashes are spliced with 90-degree milling tenon screws of the mullion connector.

⑤ The movable sash of this series adopts special Yale U-groove translation and lateral compression hardware accessories, which adopts 360° multi-locking point design to improve the sealing performance. The connecting parts adopt rack connection, which has higher transmission accuracy and stability compared with the C-groove connection method. The handle rotates 180°, and the movable sash translates 6mm, so that the movable sash and the outer frame are laterally compressed and sealed. And the sliding opening and hardware load-bearing capacity of this accessory are better than those of drifting hardware. The transmission parts are all intermediately positioned, and the installation position is uniform and accurate. After installation, turn the handle and break the positioning piece before normal transmission. There are no less than two rubber strips for sealing at the movable sash.

⑥ In order to ensure that the side cover plate and the hook cover plate do not produce cold bridge phenomenon after assembly, they are all equipped with full-length rubber strips to separate them, so as to improve the thermal insulation and heat sealing performance of the whole window.

⑦ The soft rubber windproof parts are added at the overlapping hook cover of the movable sash of the lower track and the fixed mullion, which can increase the waterproof sealing performance of the sliding window.

⑧ This series can be equipped with inward opening screen, fixed screen, accordion screen, invisible rolled screen, glass guardrail, etc. on the outside of the movable sash.



HYGT84/120C INSULATED SLIDING WINDOW



HYGT84C
Two tracks, two sashes



HYGT120C
Three tracks with sash

PRODUCT CONFIGURATION

Item Name : HYGT84/120C Thermal insulation sliding window

Against the Wall Width: 84/120mm

Insulation Strip Width: Frame 22mm

Profile Thickness: 1.8mm

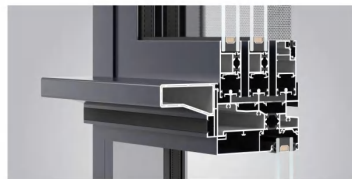
Glass: 5+15A+5

Sash Visible Surface Size : Glass sash 63.5mm, side seal 40mm, the upper rail 50mm, the lower rail 52mm

Opening Mode : Two-track two-sash, two-track four-sash, three-track three-sash, three-track six-sash, three-track two-sash with screen, three-track four-sash with screen

PRODUCT ADVANTAGE

- ① The HYGT84/120C series of thermally insulated sliding windows features a simple, square design and is designed with a systematic approach.
- ② The lower rail features a stepped, concealed drainage system, stainless steel rails, and double sidewalls, providing both waterproofing and drainage. This invisible drainage design utilizes water pressure for smooth drainage and an aesthetically pleasing appearance. The lower rail can be fitted with a handrail-resistant surface pipe.
- ③ The vertical side seals, upper and lower rails, and fixed horizontal frames utilize 90-degree splicing, making waterproofing easier.
- ④ The multi-layer siliconized fur strip design provides layered wind resistance, insect protection, dust resistance, and waterproofing.
- ⑤ The ultra-contoured sliding surface and unique isobaric chamber design prevent water accumulation and leakage even in strong winds and heavy rain.
- ⑥ The precision-crafted, high-quality pulleys offer increased strength and wear resistance, ensuring easy, smooth sliding and flexible opening of the windows and doors.



DRIFT TILT-IN WINDOWS SERIES



HIGH SOUND
INSULATION



HIGH AIR
TIGHTNESS



STRONG WATER
TIGHTNESS



THERMAL
INSULATION



WIND PRESSURE
RESISTANCE



GOOD
SUNSHADE



ANTI-FOG AND
ANTI-FOULING



ANTI-THEFT AND
ANTI-PRYING



HYPY80/106A DRIFT TILT-IN WINDOW



HYPY80A
With bottom fixing

HYPY106AW with bottom fixing
(Inward opening screen)

PRODUCT ADVANTAGE

- ① This series achieves the comprehensive performance of push-pull and horizontal opening by swinging and sliding, and the products are built with systematic thinking.
- ② The outer frame has no hidden drainage structure, and the outer frame can adopt high-energy drainage or floor drain drainage. Installing a windproof drainage hole cover can solve the whistling sound caused by hidden drainage.
- ③ The glass sash adopts a four-stage sealing structure. The glass adopts a glue-free strip process (EPDM) is used inside the glass and EPDM foam composite soft and hard co-extruded strips are used outside the glass), which greatly increases the extrusion amount of the outer glass strip.
- ④ The sash frame is designed to be uneven or flush inside and outside, increasing the overlap between the rubber strip and the frame, improving the sash sealing effect.
- ⑤ Model 106A requires a screen, and options include double inward-opening screens or accordion screens.
- ⑥ The outer frame, conversion frame, and sash are all designed with extruded aluminum glue injection corner codes.
- ⑦ The angle flattening steel sheets used in this system are all 304 stainless steel glue injection steel sheets.
- ⑧ This series can be equipped with MesLo or OPK drift window hardware, and the swing-open window sash is balanced at four points.
- ⑨ The drifting inward opening method can be horizontally moved when all are opened on the basis of retaining the ventilation performance of the inward tilt window, without occupying the use space.



PRODUCT CONFIGURATION

Item Name : HYPY80/106A Drift tilt-in window

Against the Wall Width: 80mm/106mm

Insulation Strip Width: 20mm/45.3mm

Profile Thickness: Frame 1.8mm/
Glass sash 1.8mm/ Mullion 2.0mm

Glass: 5+20A+5

Sash Visible Surface Size : Inside 61.5mm, outside 34 mm

Opening Mode : Drift tilt-in/
inward opening screen or accordion screen

SUN ROOM



HIGH SOUND
INSULATION



HIGH AIR
TIGHTNESS



STRONG WATER
TIGHTNESS



THERMAL
INSULATION



WIND PRESSURE
RESISTANCE



GOOD
SUNSHADE



ANTI-FOG AND
ANTI-FOULING



ANTI-THEFT AND
ANTI-PRYING

HYGY125 SUNROOM



PRODUCT ADVANTAGE

- The modular design allows for on-site assembly of individual components.
- It utilizes hanging hardware for easy installation and a stylish aesthetic.
- It is compatible with most HUMYA series doors and windows.
- The top can be finished with sleek, practical moldings.

PRODUCT CONFIGURATION

Item Name: HYGY125 Series Sun room

Against the Wall Width: 125mm

Profile Thickness: Main beam, side beam 2.8mm, secondary beam 2.0mm

Glass: Top: 5mm+1.14pvb+5; Facade: 5+15A+5

Available forms: Flat roof, sloping roof, gable roof



NON-THERMAL BREAK SERIES



HIGH SOUND
INSULATION



HIGH AIR
TIGHTNESS



STRONG WATER
TIGHTNESS



THERMAL
INSULATION



WIND PRESSURE
RESISTANCE



GOOD
SUNSHADE



ANTI-FOG AND
ANTI-POOLING



ANTI-THEFT AND
ANTI-PRYING



HYPC80W NON-THERMAL BREAK CASEMENT WINDOW



HYPC80W
Casement window - fixed frame

HYPC80W Casement window
outward opening casement with screen

HYPC80W Casement window
outward opening casement with screen

PRODUCT CONFIGURATION

Item Name : HYPC80W Non-Thermal break casement window

Against the Wall Width : 80mm

Profile Thickness: Frame 1.1mm/ Sash 1.5mm

Glass : 6mm Single Glazed

Sash Visible Surface Size : 43mm for exterior sash

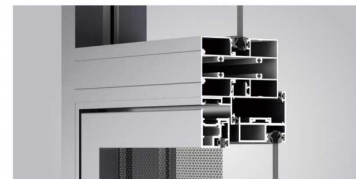
Opening Mode : Sash opens outward, screen sash opens inward

PRODUCT ADVANTAGE

① The glass slots in this structure are designed with a glue-free stripping process (EPDM is used on the inner glass, and EPDM foam composite hard-soft co-extruded stripping is used on the outer glass, significantly increasing the outer glass stripping capacity).

② The hardware mounting slots for the open sash feature a 14mm wide slot in the frame and a 20C slot in the sash. This allows for universal hardware and high performance.

③ This series features a split sub-frame construction, with optional screen.



HYPM80W SWING DOOR



HYPM80W Swing door

PRODUCT CONFIGURATION

Item Name : HYPM80W Swing door

Against the Wall Width: 80mm

Profile Thickness: Frame 1.1mm/ Sash 1.4mm

Glass: 6mm Single Glazed

Sash Visible Surface Size : 53mm

Opening Mode : Outward Opening

PRODUCT ADVANTAGE

- ◎ This series of exterior swing doors can be designed as single-sash, bi-fold, with or without a threshold, etc.
- ◎ The glass slots in this structure are designed with a glue-free stripping process (EPDM is used on the inner glass, and EPDM foam composite soft-hard co-extruded stripping is used on the outer glass, greatly improving the outer glass glue extrusion capacity).
- ◎ The hardware mounting slots for the open sash feature a 14mm wide slot in the frame and a 20C slot in the sash. This ensures versatile hardware.





HYTC80W NON-THERMAL BREAK SLIDING WINDOW



HYTC80W Sliding window
two tracks, two sashes



HYTC80W Sliding window
two tracks, four sashes

PRODUCT ADVANTAGE

- ◎ Stepped concealed drainage and stainless steel rails provide both waterproofing and drainage.
- ◎ Multiple strips provide excellent sealing.
- ◎ Inner and outer adhesive strips secure the glass, enhancing the appearance and simplifying installation.



PRODUCT CONFIGURATION

Item Name : HYTC80W Non-Thermal break sliding window

Against the Wall Width : 80mm

Profile Thickness : 1.1mm

Sash Visible Surface Size : 44mm

Glass : 6mm Single Glazed

Opening Mode : Three-track and two-sash with screen,
three-track and four-sash with screen

HYTM80W NON-THERMAL BREAK SLIDING DOOR



HYTM80W Sliding door
two tracks, two sashes

HYTM80W Sliding door
two tracks, four sashes

PRODUCT CONFIGURATION

Item Name : HYTM80W Non-Thermal break sliding door

Against the Wall Width: 80mm

Profile Thickness: 1.4mm

Glass: 6mm Single Glazed

Sash Visible Surface Size : 56mm

Opening Mode : Two-track and two-sash, two-track and four-sash

PRODUCT ADVANTAGE

- ① The outer frame features 90-degree joints.
- ② This series offers two lower rail designs: a high-waterproof rail and a low-flat rail. The high-waterproof rail features a concealed drainage structure, utilizing water pressure for smooth drainage and an aesthetically pleasing appearance.
- ③ The high-waterproof rail utilizes a stepped, concealed drainage system and stainless steel rails, providing both waterproofing and drainage. The ultra-high, contoured lower rail and unique isobaric chamber design prevent water accumulation and leakage even in high winds and heavy rain.
- ④ The door sashes feature a multi-row seal design, providing layered protection against strong winds, insects, dust, and water.





HYZD50/80Z NON-THERMAL BREAK FOLDING DOOR



HYZD50Z Folding door



HYZD80Z Folding door

PRODUCT ADVANTAGE

- ① The product features a top-hanging, bottom-push structure for smoother operation.
- ② The folding sash allows for flexible configurations, such as single + single and N + 0, to meet diverse usage scenarios.
- ③ It can be configured with either single or laminated glass to meet diverse customer needs.
- ④ The sash glass utilizes internal and external adhesive strips for enhanced aesthetics and easier installation.



PRODUCT CONFIGURATION

Item Name : HYZD50Z/ HYZD80Z Non-Thermal break folding door

Against the Wall Width : 58mm

Profile Thickness : Upper Rail 4.0mm / Lower Rail 1.5mm Glass : 6mm Single Glazed

Sash Visible Surface Size : 70mm

Opening Mode : Single-folding, double-folding, and multiple options

EACH WINDOW IS A ONE-OF-A-KIND WORK OF ART.
HUMYA WILL TAILOR A UNIQUE SPACE JUST FOR YOU,
REFLECTING YOUR PERSONAL TASTE.

